

# Zeal for Innovation in EU Projects

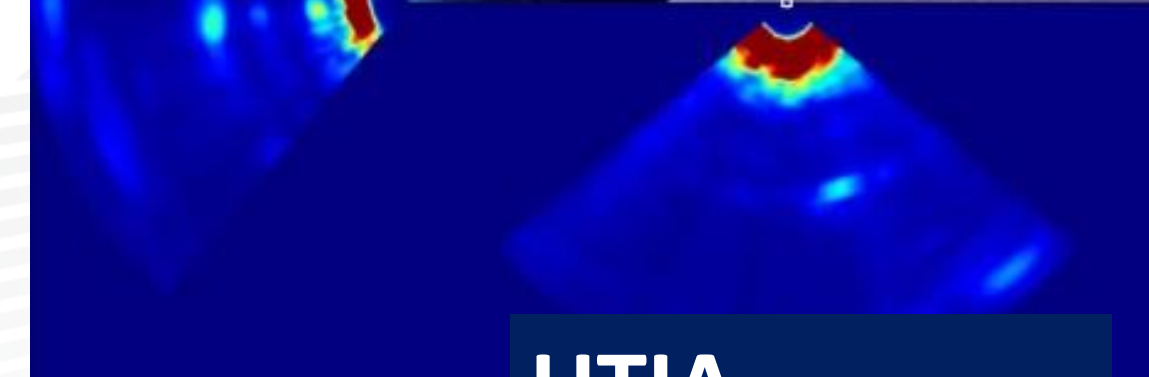




# SILENSE *for* Gesture Sensing

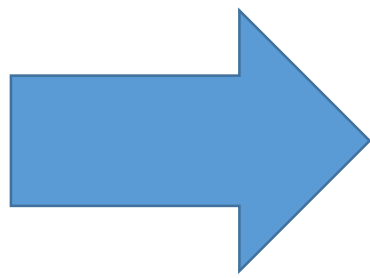


*How to facilitate all your entries everyday everywhere*

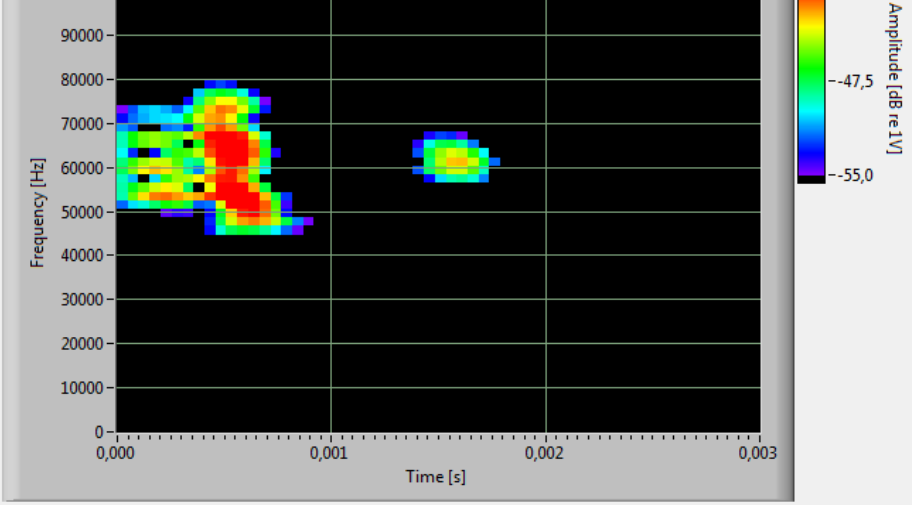
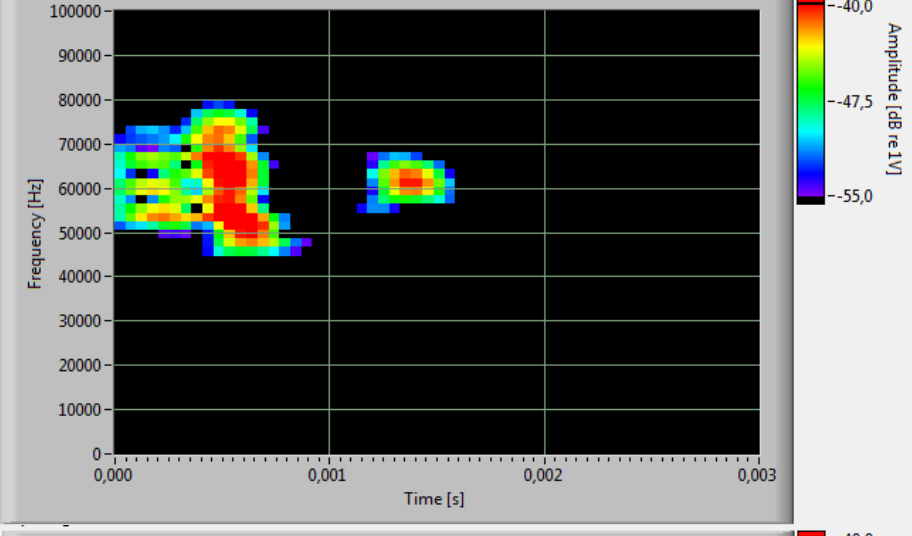
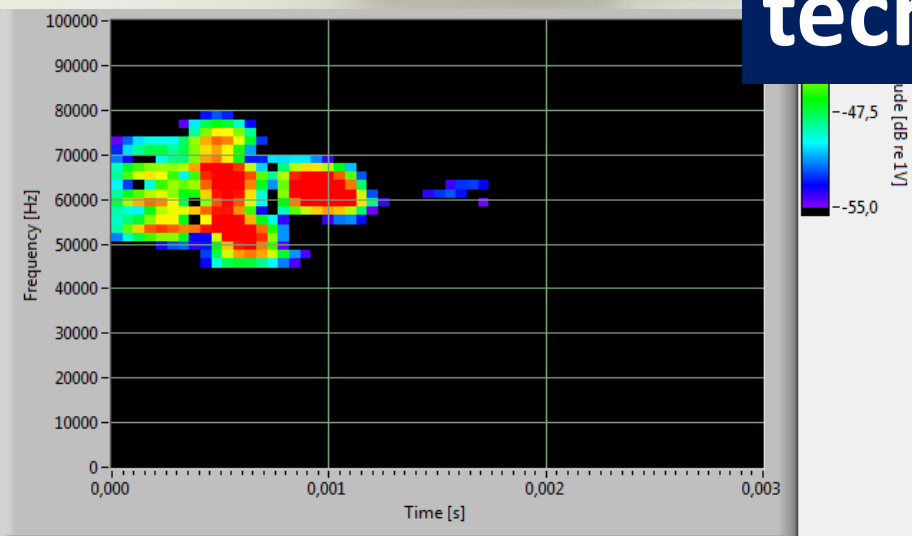
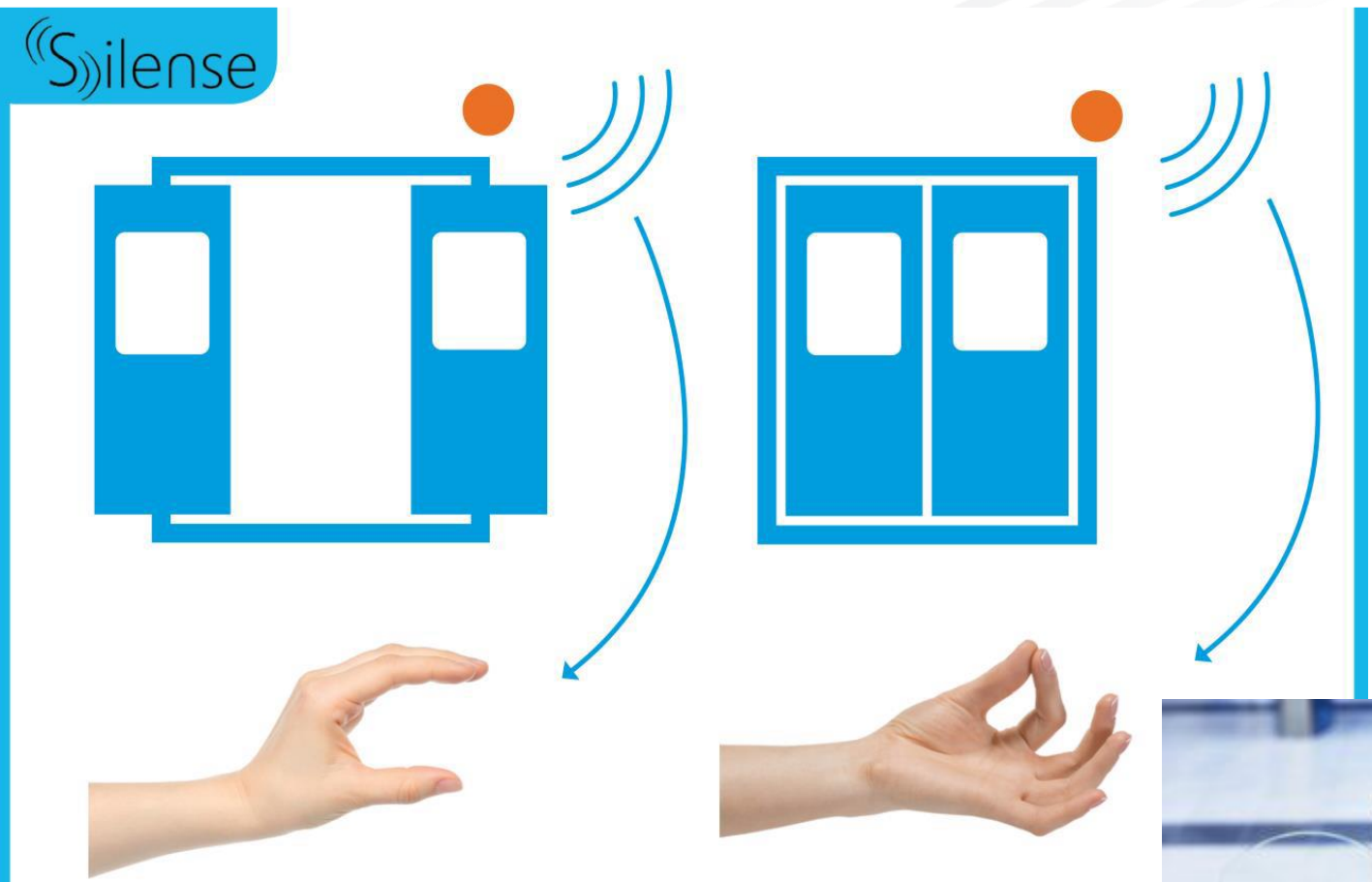
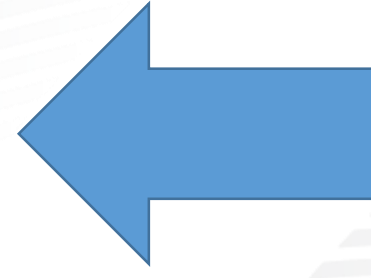


**UTIA technology**

**BUT technology**



**IMAporterG gesture based ACS**

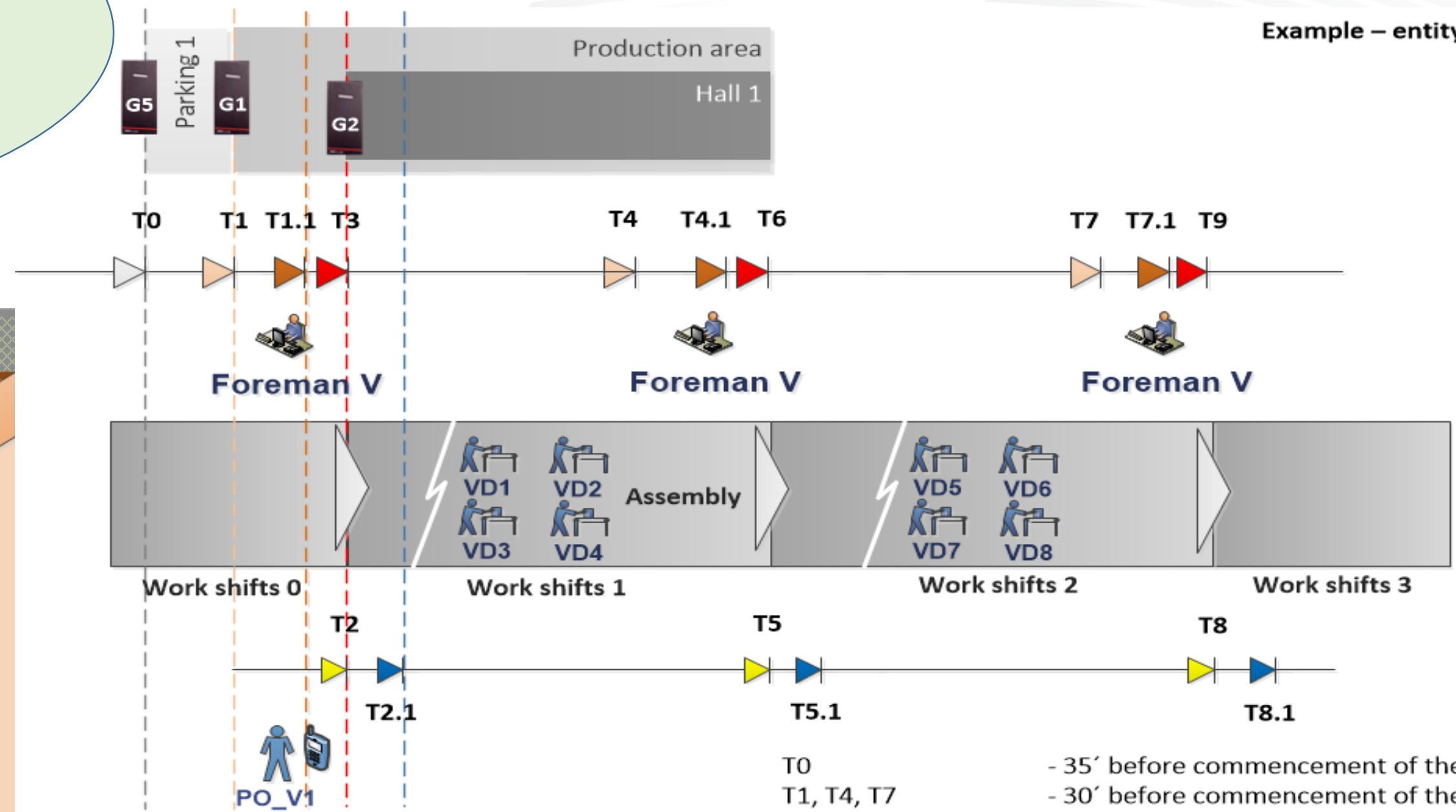




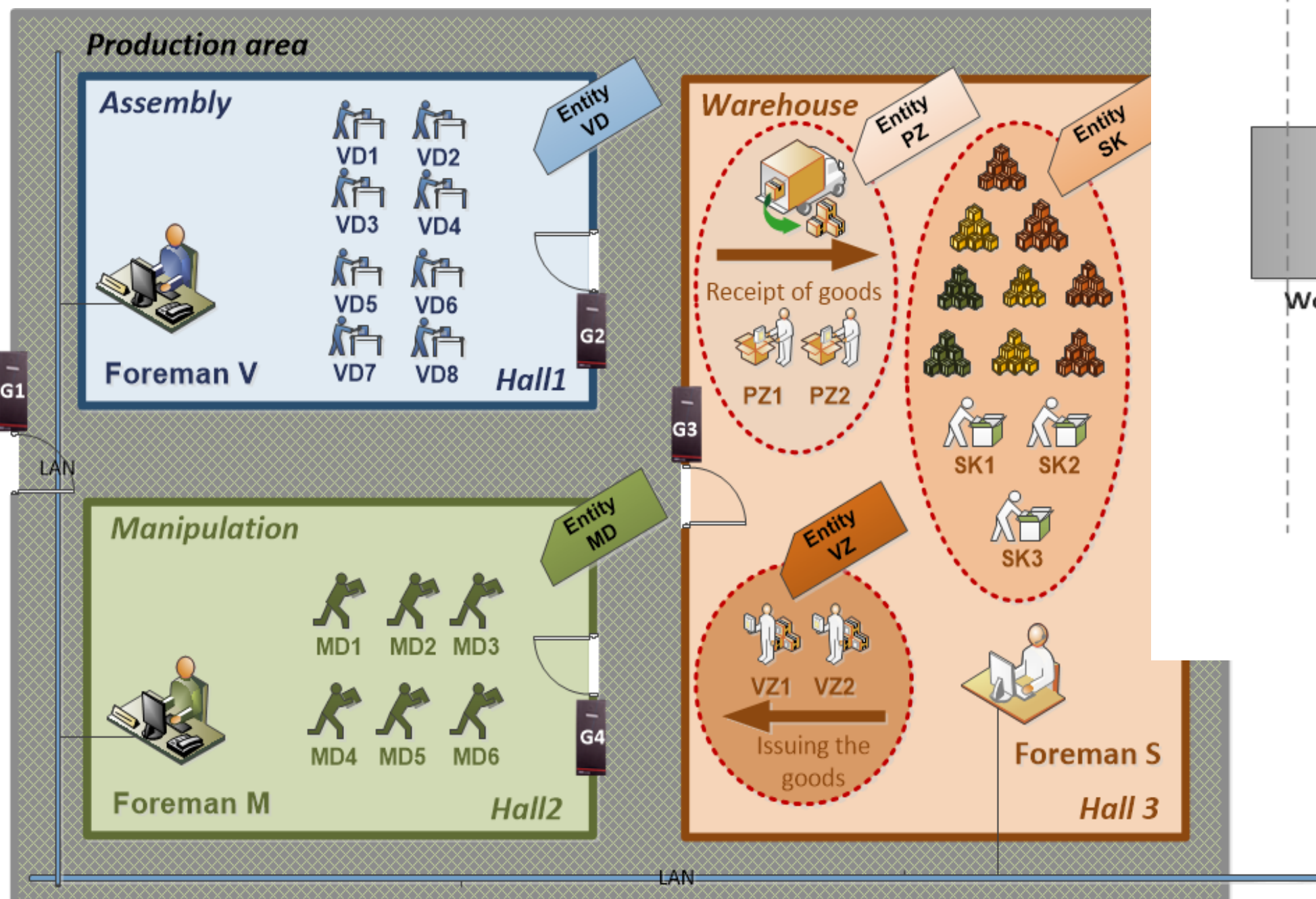
# TRUST4.0 *for* Dynamic Access Rights Management

- How to ensure a dynamic manufacturing in Industry4.0?
- How to ensure all kind of resources are in-place & on-time?

Example – entity VD



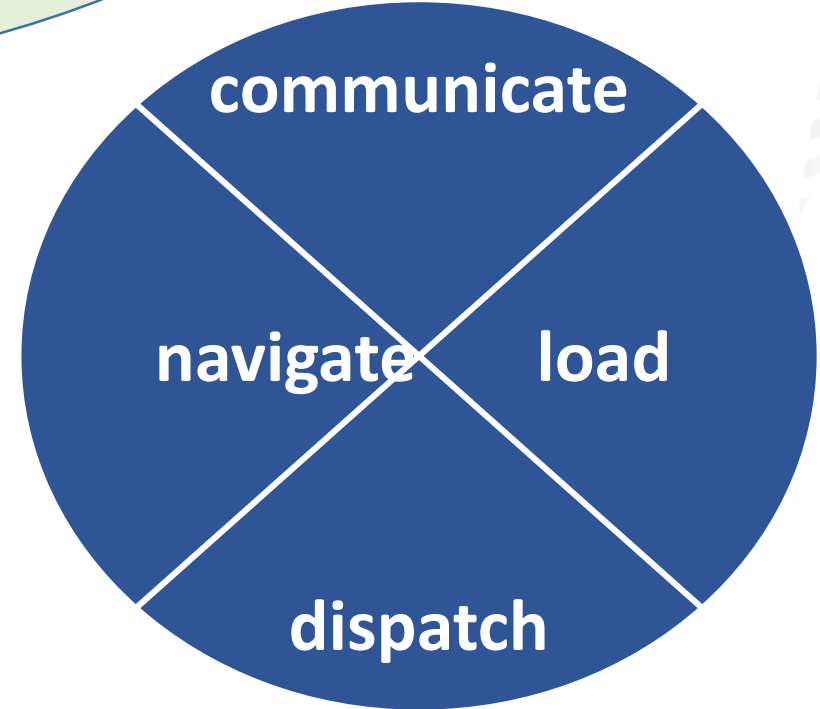
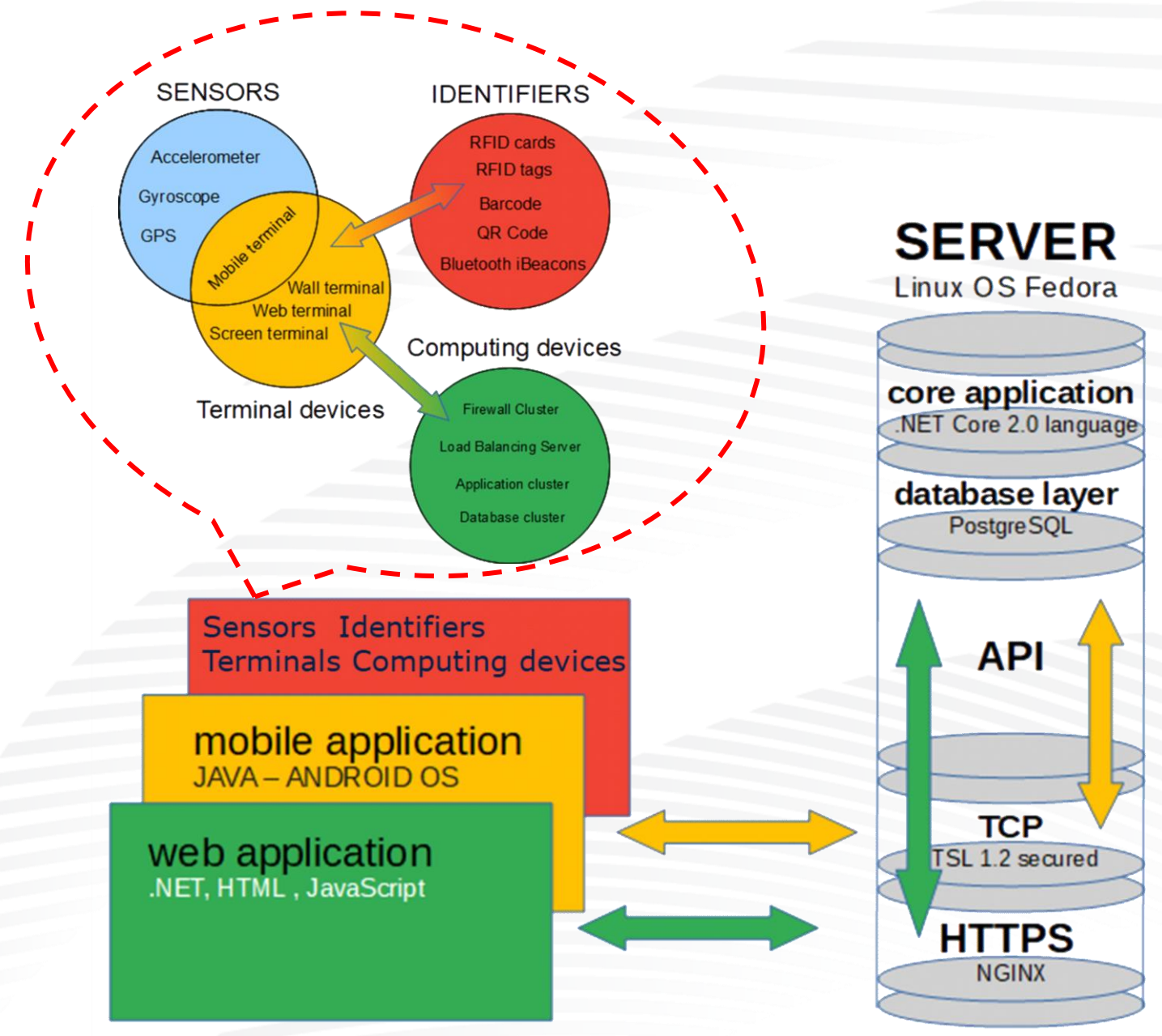
- T0
- T1, T4, T7
- T1.1, T4.1, T7.1
- T3, T6, T9
- T2, T5, T8
- T2.1, T5.1, T8.1
- 35' before commencement of the shift
- 30' before commencement of the shift
- 10' before commencement of the shift
- Start of shift
- End of shift
- 30' after the end of the shift



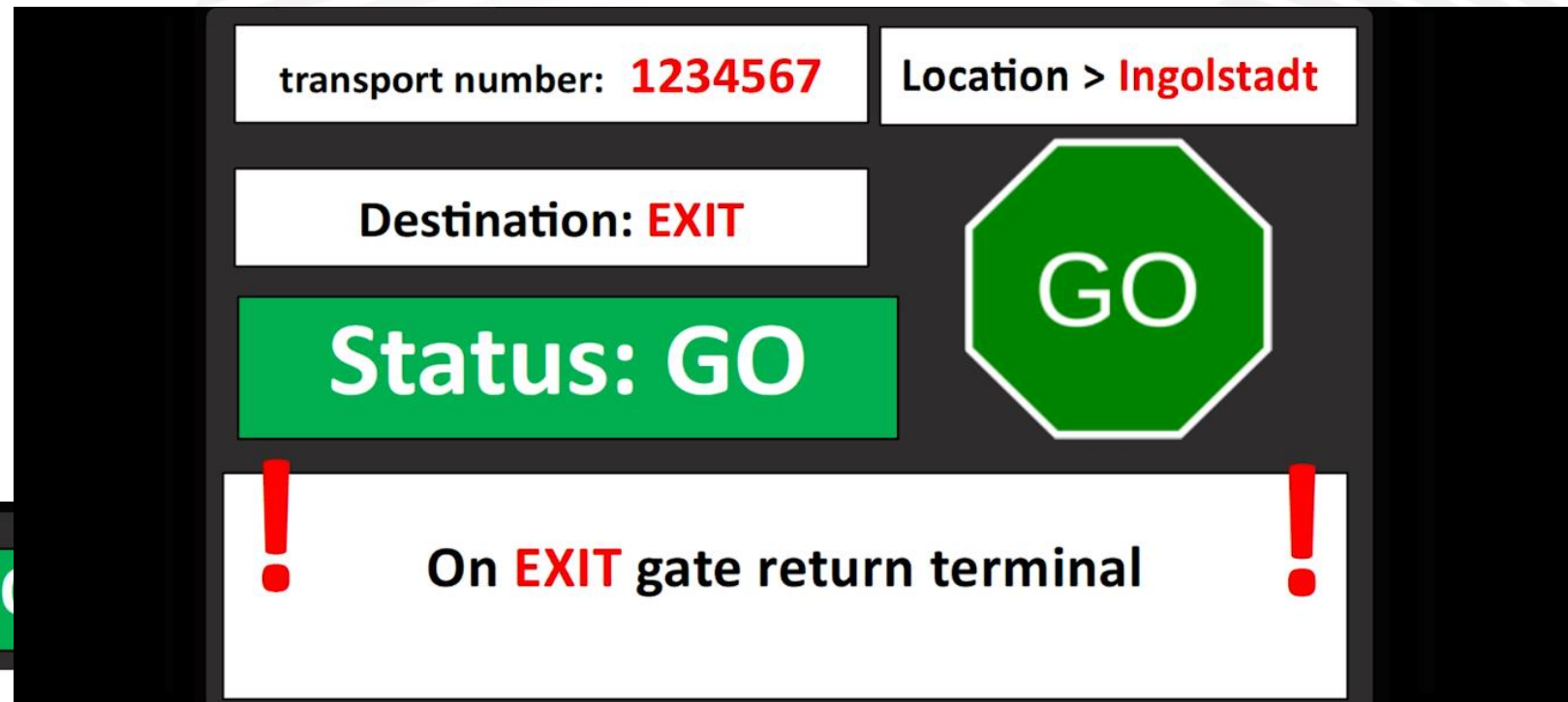


# PRODUCTIVE4.0 *for* Making Traffic Smart

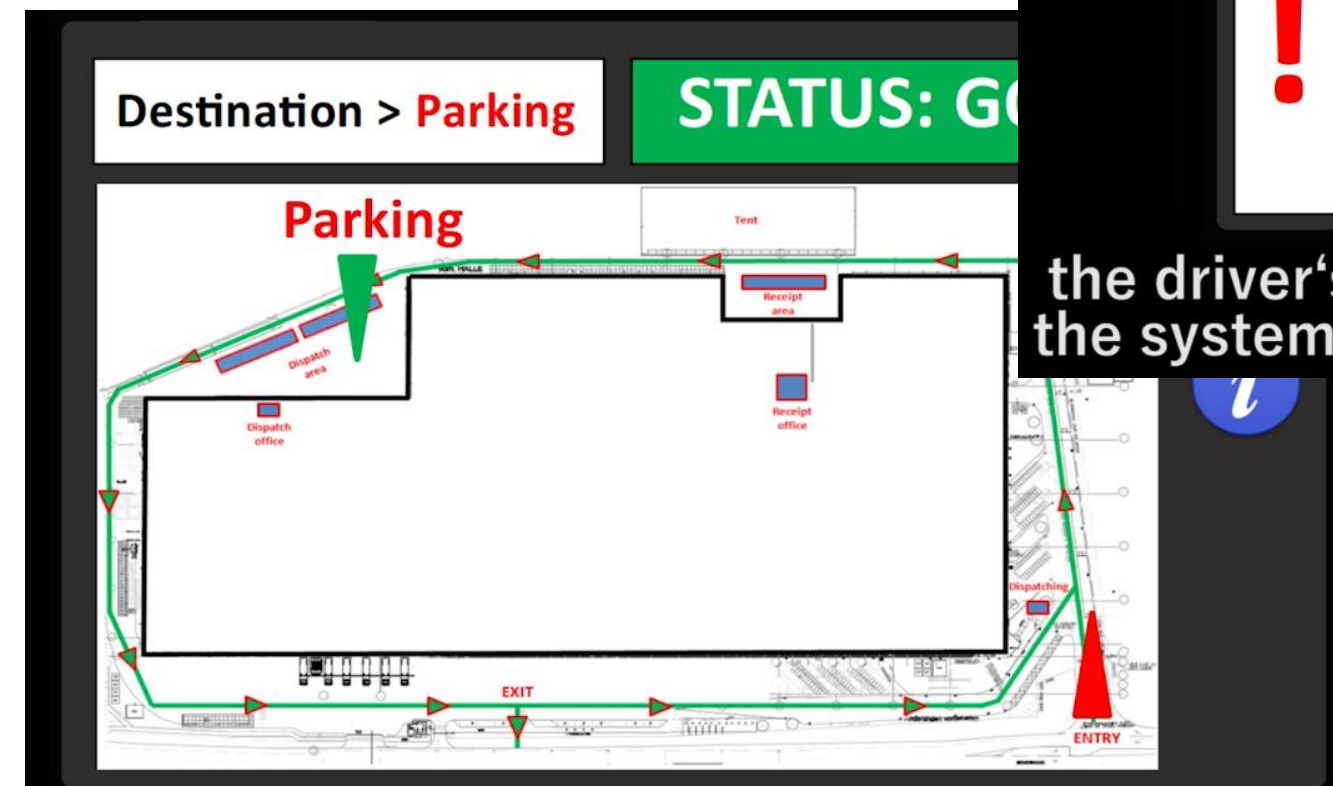
*How to orchestrate a smooth transportation between production line and expedition warehouse?*



Thanks to the GPS, the system detects the driver's arrival in the car park.



the driver's terminal screen is automatically switched by the system according to the set scenario to the next step.



The driver's terminal gives the dispatching and the expedition warehouse an overview

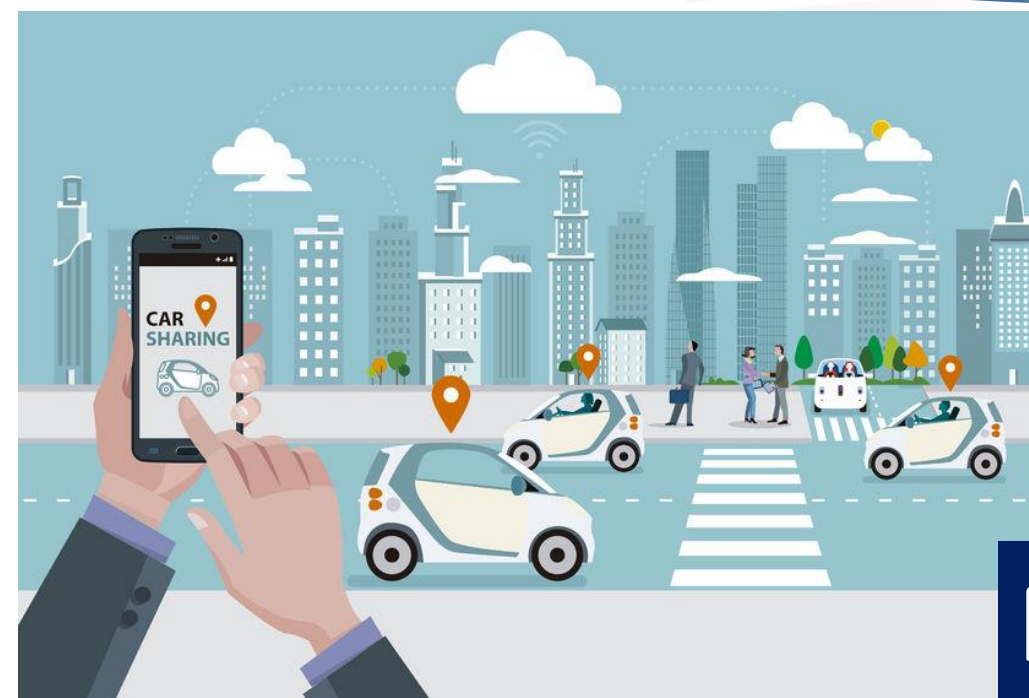




# Are We Ready *for* Building AI?

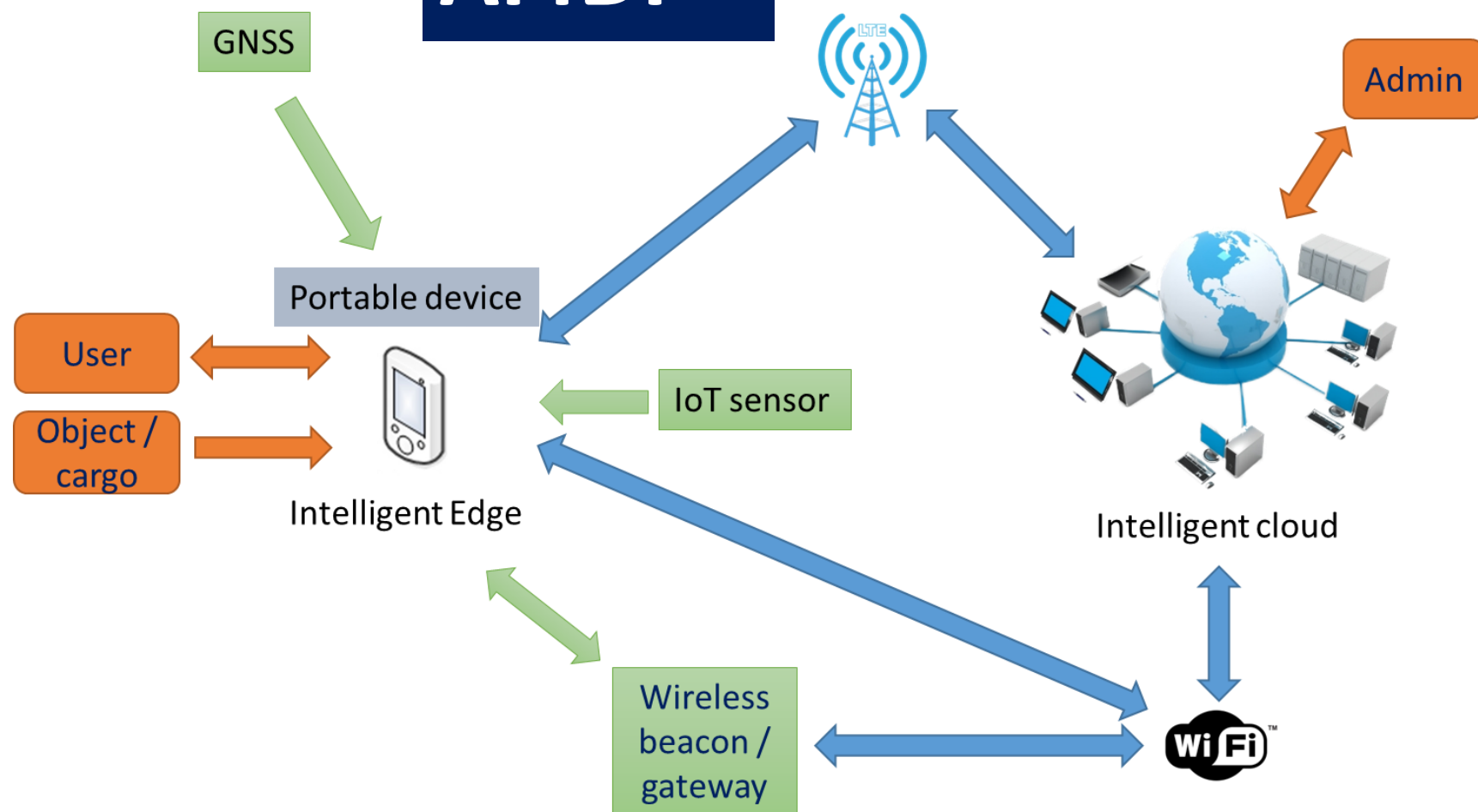
*How the AI & Edge Computing helps to Human-Machine interaction and change detection within production and logistics?*

*How the AI helps to ensure fail-operational functions for a vehicle sharing platform?*



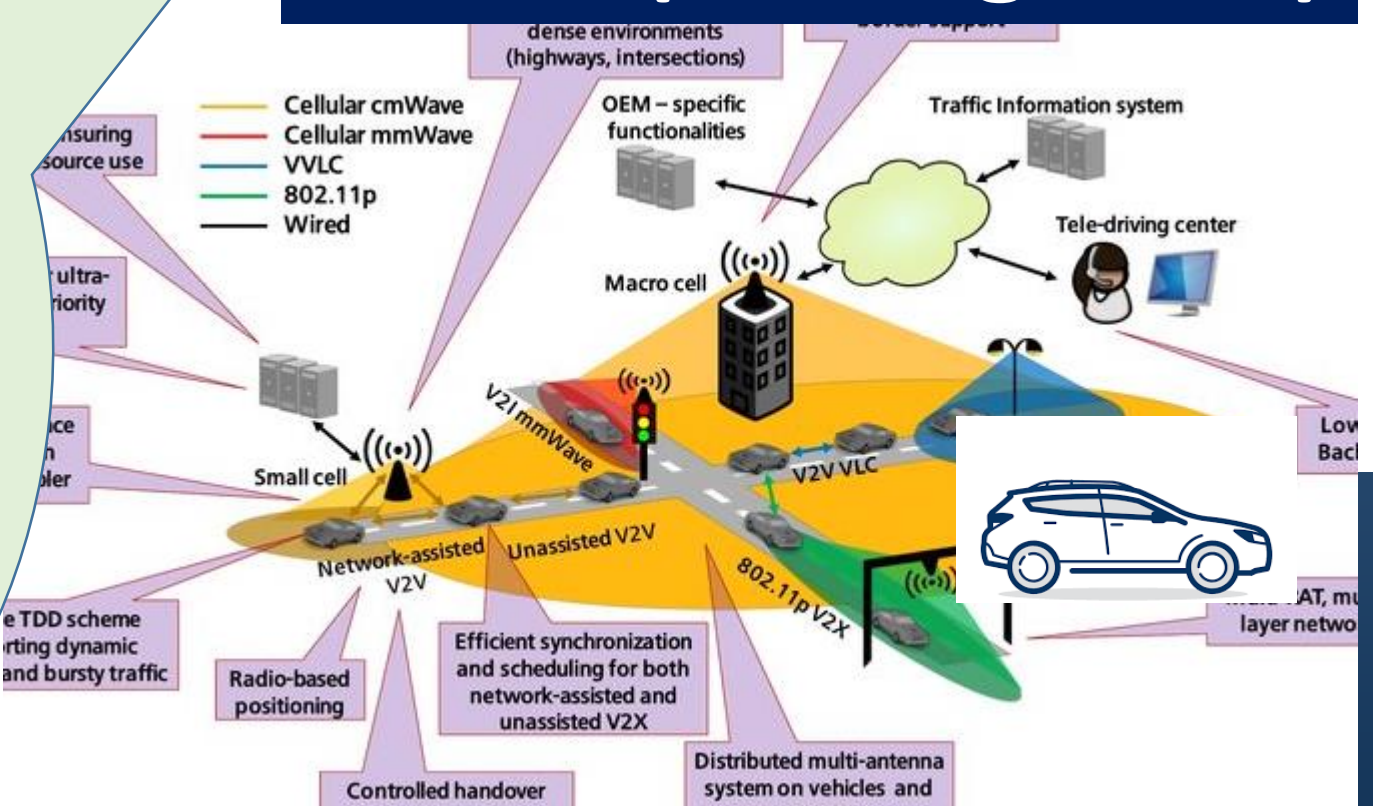
**NewControl**

**AI4DI**



*How the AI algorithms help to optimize V2I services within an autonomous vehicle sharing platform?*

**BRAIN (coming soon)**





IMA s.r.o.

Na Valentince 1,  
150 00 Prague  
Czech Republic

Tel.: (+ 420) 251 081 097

E-mail: [ima@ima.cz](mailto:ima@ima.cz)

[www.ima.cz](http://www.ima.cz)